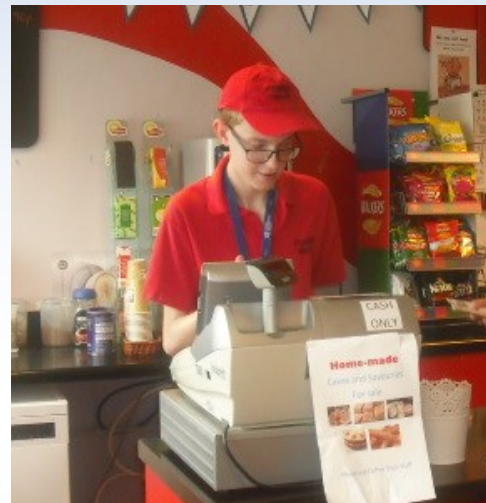


WEATHERFIELD ACADEMY Key Stage 5



Including Information of:

Curriculum / Accreditation Pathways
General information &
Uniform

Last updated July 2020

By Mrs C Patterson, Head of Key Stage 5

WEATHERFIELD ACADEMY KEY STAGE 5



Welcome to Weatherfield Academy Key Stage 5 - 'To Become The Best Person You Can Be'

Whether you are entering Key Stage 5 in Year 12 or continuing your Key Stage 5 studies in Year 13 or Year 14, we are delighted you chose Weatherfield Academy for the next stage in your education.

The information in this booklet is designed to help you make the most of your time in Key Stage 5 at Weatherfield Academy; we want you to be happy and successful in your studies with us. The Key Stage 5 staff pride themselves on promoting the school ethos 'To Become The Best Person You Can Be' and will support you 100% throughout your journey with us. We also look to you as role models for the younger students and therefore have the highest expectations of you whilst in Key Stage 5.

We are all so proud that you have made the next step in your education and wish you all the best in your studies in Key Stage 5 of Weatherfield Academy. I am on hand, as are all the Key Stage 5 Staff to help you in anyway so please talk to us about anything you need to either academically or socially. Please be reassured that we are fully committed to ensure that your stay in 6th Form is happy and rewarding.

We have included in this booklet everyday information including details of rules and regulations, opportunities available to you etc.

Well done in making the next step and we all sincerely hope you enjoy being a member of Weatherfield Academy Key Stage 5.

**Mrs C Patterson
Head of Key Stage 5**

***'Leading the way as a provider of Excellent Education for 6th Form students with Special Educational Needs,'* Personal Statement by Mrs Patterson.**

PLEASE KEEP THIS BOOKLET FOR FUTURE REFERENCE

WEATHERFIELD ACADEMY KEY STAGE 5



THE SCHOOL DAY IN KEY STAGE 5, COMMUNICATION, ATTENDANCE AND ABSENCE

Weatherfield Academy Key Stage 5 runs in line with the main school timetable.

Registration / Tutor Time is from 9.10 until 9.30 and is **compulsory** for all Key Stage 5 students. It is the time when important information is passed via tutors or through assemblies. It is also an opportunity to develop and continue communication links from home to Academy via the Academy Planners.

The Key Stage 5 Students are able to access a kitchen/seating area in Rooms 15 and 16 at break and lunch, there is also another quiet seating area in Room 17. Students are asked for a voluntary contribution of £2.50 each half term towards tea, hot chocolate, milk, squash, bread etc., if they wish to use this facility.

Communication

It is essential that the Key Stage 5 Pastoral Team are able to make contact with you regularly to keep you informed as to your son/daughter's progress. Please complete the attached form at the back of this booklet with your preferred method of contact e.g. email, mobile etc.. Thank you.

Attendance & Absence

There is a proven link between attendance and achievement. We want all of our Key Stage 5 students to achieve the highest possible standards, and therefore attendance is constantly monitored. Students will be asked to explain absences to their form tutor.

Parents will be notified when unauthorised absence occurs; this is any absence not explained in writing or by telephone by a parent/carer. The school must be notified of any unexpected absence.

Parents should call telephone number 01582 605632 by 10.00am on the first day of absence and each subsequent day of absence. On returning to school, written notification should be shown to the Form Tutor. The school should be informed of any known future absences.

Students are instructed to avoid booking medical appointments and driving lessons during timetabled lessons.

WEATHERFIELD ACADEMY KEY STAGE 5



YEARS 13/14, KEY STAGE 5 FORM CLASSROOMS, CLASS REPRESENTATIVES AND TRANSPORT

Continuation into Year 13 / 14 Continuation into Year 13 / 14 is not automatic; it will depend on attendance, behaviour and work ethic demonstrated in Year 12/13.

The Key Stage 5 Classrooms The Key Stage 5 classrooms are Rooms 15, 16 and 17. The students will access our Careers Hub in the main Academy building to support their education.

There are also lockers in Rooms 15 and 16 allowing for every student to have their own personal locker. Keys and padlocks can be bought by the students. Spare keys can be kept in our key safe.

As throughout the Academy students are asked to treat the facilities respectfully. There will also be a rota for ensuring the Common Room is tidy and washing up and cleaning up is carried out to a high standard.

School Council, Eco Monitor & Fair Trade Representatives Students from each of the Key Stage 5 classes are invited to apply to become one of our representatives. Their intention should in the first instance be passed to their Form Tutor; the proposed names will then be voted for by the whole of the Key Stage 5 students. This will be done at the start of the Autumn Term.

Transport

Buses We are advised that students who have been receiving transport to school in Key stage 4 should be able to apply for this to continue. If you are new to the school you will have to discuss with Miss Hoare if transport can be arranged. There will be a charge made for the use of transport and this will be discussed via the transport providers.

Cars Parents or carers may assist with transport and drop students off at the school site. You may enter the school and go to the Key Stage 5 Rooms where early registration must be completed for health and safety reasons.

Bikes You will be permitted to ride a push bike to school and in some circumstances a motor bike. However, you shall require permission from parents and Mrs Patterson. Please collect a form from Mrs Patterson or your tutor if you wish to travel by these methods.

WEATHERFIELD ACADEMY KEY STAGE 5



DRESS CODE

There is a Key Stage 5 Uniform that is compulsory for all students.

You can purchase the Key Stage 5 Uniform by collecting a form from Miss Hoare or on the internet via the tesco website—<https://www.tesco.com/direct/ues/>

The uniform comprises of:-

White or black polo shirt with the Academy logo. (Or a standard white or black polo shirt).

Plain black trousers or skirt (at a sensible length), made in a suitable material for Key Stage 5. Jeans/denim style trousers or leggings are not permitted.

Black V-neck knitted sweater or cardigan with logo.

Light weight shower and wind proof jackets in black with logo.

Black footwear only - Plimsolls, trainers, military style boots and canvas shoes are not acceptable, or 'Fashion Footwear'.

Any issues with the dress code will be dealt with by Form Tutors in the first instance and then by the Head of Key Stage 5, Mrs Patterson.

Body Piercing

Students will be asked to remove or cover up studs/rings on their person.

Tattoos

No visible tattoos are permitted.

Hair Colour

Hair should be a natural colour even if dyed, ie. no pink, blue, green colour is acceptable. Hair should be styled in keeping with 'professional office' dress.

Jewellery

Sleeper or stud earrings only. No excessive jewellery. Students will be asked to remove excess jewellery and belts.

Belts

Plain black only, in keeping with 'professional office' dress.

WEATHERFIELD ACADEMY KEY STAGE 5



REWARDS AND BEHAVIOUR

The school operates a behaviour system for students in all Academic Years. There is also a rewards system, where students are awarded points for achievement and for making a positive contribution to school life.

These points are then added to the student's individual house and accrued throughout the year until the end of the academic year when the winning House is announced.

Behaviour or a work ethic which causes staff concern will be discussed with students and parents. The following sanctions are available to staff:

Warnings, phone call/letter home, interviews with appropriate personnel, detentions, monitoring cards, parental interviews, isolation/ exclusion, asked to leave Weatherfield Academy.

Prefects

All Key Stage 5 students will be expected to contribute to the school community. There will be a variety of options available to you:-

Assisting Form time,

Supporting Literacy/Numeracy in the lower end of school,

Supporting lunchtime clubs,

Running sporting activities on playgrounds at break and lunch times,

Supporting staff on duty

And many more.....

Where to go for help?

There are many sources of support available to students whilst in Key Stage 5. If we can't deal with your query, we'll definitely be able to find someone who can, and point students in the right direction to find them. See your Form Tutor or Mrs Patterson in the first instance.

WEATHERFIELD ACADEMY KEY STAGE 5



CURRICULUM OVERVIEW

Our aim at Weatherfield Academy Key Stage 5 is to provide all students with a broad and balanced curriculum, tailored to the individual's needs and with a range of opportunities that will prepare them for adult and working life. Students will be placed on a suitable core subject level according to ability and previous achievements.

The majority of the students learning experiences take place in school, where each pupil follows the National Curriculum. They follow a basic core of subjects throughout the week, listed below. Each student gets to access all the options on a termly basis to ensure all the students have equal opportunities.

The courses currently on offer are listed but these may be added to and you will be made aware of any additions.

Key Stage 5 Subjects

English/Current Affairs	Duke of Edinburgh Bronze/Silver
Mathematics	Hair and Beauty
Computing/ICT	Entry Level PE
ASDAN Employability	Child Care / Health & Social Care
ASDAN PSD	Young Enterprise / Tenner Challenge
PSHCE/Seal	Horticulture
Work Experience College Cafe	Health and Social Care
Careers	Dance
Preparation for Life Programme	Science
Drama	Life Skills

WEATHERFIELD ACADEMY KEY STAGE 5



ENGLISH

The students will continue to follow the new English Curriculum, AQA English Coursework and Edexcel English Functional Skills Programmes of Study. The students will be working on prior attainment in order that they can progress to their next achievement level. The curriculum is bespoke to the needs of the students including differentiated reading, writing and spoken language materials.

Throughout the whole English Curriculum the students will have daily **Sounds-Write** phonic based starters including high frequency word recognition.

For our Gifted and Talented students they will be working towards the GCSE Level 9-1 accreditation and for our intervention students they will work on the Moon Dog Series to support their learning.

Weatherfield Academy Key Stage 5

English Progression Table

	Edexcel English Coursework Entry Levels 1, 2 and 3 and/or Edexcel Functional Skills Entry Levels 1, 2 and 3	→	Edexcel Functional Skills Level 1 Reading Writing And Spoken Language	→	Edexcel GCSE Level 9—1	

WEATHERFIELD ACADEMY KEY STAGE 5



MATHEMATICS

Mathematics

The students will continue to follow the new Maths Curriculum, AQA Entry Level Coursework and Edexcel Functional Skills Programmes of Study. The students will be working on prior attainment in order that they can progress to their next achievement level. The curriculum is bespoke to the needs of the students including differentiated teaching materials.

Throughout the whole Maths Curriculum students are given daily counting, times tables and problem solving activities.

For our Gifted and Talented students they will be working towards the GCSE Foundation Level accreditation and for our intervention students they will receive Numicon intervention.

Weatherfield Academy Key Stage 5

Maths Progression Table

	AQA Maths Coursework Entry Levels 1, 2 and 3 and/or Edexcel Functional Skills Entry Levels 1, 2 and 3	→	Edexcel Functional Skills Level 1	→	Edexcel GCSE Level 9 - 1	

WEATHERFIELD ACADEMY KEY STAGE 5



COMPUTING/ICT

The students will continue to follow the ICT Curriculum and Edexcel Functional Skills. The students will be working on their prior attainment in order that they can progress to their next achievement level. The curriculum is bespoke to the needs of the students and differentiated appropriately.

Functional Skills includes:- Using ICT, Finding & Selecting Information and developing, presenting and communicating information.

ASDAN Personal, Social Development and Employability

The PSD scheme of work is developed to support young people to become confident individuals who are physically, socially and emotionally healthy.

We are wanting our students to become responsible citizens who make a positive contribution to society and the PSD units support this learning.

It also helps the young people to look at managing risk and is linked with their own well being.

The Employability scheme of work provides an excellent framework for our students to recognise and develop employability skills. It prepares them for the world of work including units:-

Maintaining Work Standards, Team Working, Career Exploration etc.,

These units are both nationally recognised qualification and allow our young people to achieve accreditation at their expected level.

PSHCE AND SEAL

All Key Stage 5 students receive a PSHCE/Seal lesson every week. There are different themes for each half term and cover the following areas:-

Health, Democracy, Citizenship, Sustainable Development, Bullying, Emotional Well-Being, Drug Education, Discrimination, Media, Relationships and Sex Education, Friendships and Relationships.

The areas covered are supported by outside agencies for example:- CAN Drugs and Alcohol Service, Local Police, Kick-Ash, Domestic Abuse Officer and the School Nurse.

The ASDAN PSD units are also linked to the PSHCE themes to support the pupils in their cross-curricular learning.

WEATHERFIELD ACADEMY KEY STAGE 5



CAREERS, WORK EXPERIENCE, LIFE SKILLS AND SUBJECTS

Careers

Students have the opportunity through the ASDAN Employability Units, regular support from the Youth Support Team and a dedicated weekly Careers Lesson to support them.

Work Experience

Every student in Key Stage 5 gets the opportunity to spend time in the Central Bedfordshire College Café gaining crucial work experience.

They are given the opportunity to learn how the café runs on a daily basis, explore all the different job roles and develop their customer service skills. Each student takes the role of manager and is entrusted to ensure all the students are on task, the café runs smoothly and all the customers are dealt with politely and professionally.

Life Skills

The Key Stage 5 Curriculum offers our students the opportunity to develop life skills in a number of areas including:-

Current Affairs, ASDAN Employability and PSD, PSHCE/Seal, Work Experience as well as the day to day Key Stage 5 Curriculum, Social Life and extra curricular responsibilities.

SUBJECTS

Young Enterprise Team Programme/Young Enterprise Tenner Challenge

Each year the students will get the opportunity to work with Young Enterprise either in the Team Programme or Tenner Challenge opportunities.

Duke of Edinburgh Bronze/Silver Awards

Weatherfield Academy Key Stage 5 is a Licensed Organisation for the Duke of Edinburgh Awards.

We have 18 students over the past 2 years who have gained their Bronze Award and in 2016-2017 we had 5 students who achieved their Silver Duke of Edinburgh Award.

We will be continuing to deliver the Bronze and Silver Awards to the students giving them this fantastic opportunity to achieve this very highly recommended achievement.

WEATHERFIELD ACADEMY KEY STAGE 5



SUBJECTS

Hair and Beauty

Hair and Beauty Vocational Taster offers the students the opportunity to complete challenges and skills development according to individual ability. It contains modules in:-

Customer Service, Basic Hairdressing Techniques, Basic Facial Treatments, Health and Safety in Hair and Beauty and Careers in Hair and Beauty.

Physical Education

This course encourages candidates to improve their ability to plan, perform and evaluate physical activities. It aims to improve their knowledge, skills and understanding of a range of physical activities alongside their performance in a range of skills.

Childcare/Development

Our Childcare/Development Course will include:-

Family structures in the UK, Preparation for Pregnancy and Birth, Physical Development, Intellectual, social and emotional development and Community Support.

Students will gain experience in diet and health in relation to young babies and children, stages and conditions of development and support available to the child and family.

Health and Social Care

Our Health and Social Care Course will include:-

An introduction to the care of the elderly, health needs of children and the elderly, community work with the elderly, volunteering on an intergenerational community project, introduction to safeguarding for children and the elderly and working with health, education and social care systems.

Further Information

If you require any further information about the Key Stage 5 Curriculum please contact:-

Mrs Carol Patterson, Head of Key Stage 5 on 01582 605632 or email at -

cpatterson@weatherfield.beds.sch.uk

Please do not hesitate to ask whatever your question is or whatever information you require.